

**SQUARE  
PARTS**  
puppet theatre

**FESTIVAL  
& EVENT  
WORKS**

Spare Parts Puppet Theatre offers a range of performances perfectly suited to your festival or event.

Roving performances by larger than life characters, educational and fun puppetry workshops, small and intimate or large scale interactive installations.

There is something for everyone!

Looking for something different? Please contact us to discuss your ideas. We also tailor interactive puppet performances for your event.

## ENQUIRIES

To enquire about our performances or workshops please contact our Programs Manager on +61 8 9335 5044 or email [programs@sppt.asn.au](mailto:programs@sppt.asn.au)

[www.sppt.asn.au](http://www.sppt.asn.au)







Photos by Danica Zuks

# STRING SYMPHONY

*String Symphony* is a large scale interactive sculptural installation that invites everyone to be a puppeteer.

This giant illuminated puppet-installation will be a focal point of any event, creating a hub of activity, excitement and wonder. *String Symphony* is a shared, multi-sensory experience suitable for all ages that celebrates connection, community and collaboration.

When people discover the giant handcrafted marionette suspended within a network of ropes, it is up to them to give it life.

## SUITABILITY

Suitable for any festival, outdoor event or venue.

## DURATION

Performed in 40-minute sets

## TECHNICAL SPECIFICATIONS

- *String Symphony* requires a hard, flat floor space of 10m Width x 10m Depth x 6m Height, and access to power
- The total box truss dimensions are; 6m Height x 5m Width x 5m Depth

## AGE SUITABILITY

All ages

Created by Leon Hendroff, *String Symphony* was originally commissioned by City of Joondalup.









# THE HIVE



Calling all worker bees, drones and nurse bees, your Queen awaits!

Join our beekeepers for a hive of crafty activity. A busy bee of making, flying and playing in this immersive interactive journey from flower to pollination!

Only bees on their best bee-havior will get to go to the Hive to see the Queen Bee and do the waggle dance.

The Hive explores themes of connection, teamwork, and sustainability. It teaches young people and adults alike the process of pollination and the importance of the hardworking bees coming together as a community for a common goal.

## **SUITABILITY:**

Suitable for any festival, outdoor event or venue.

## **TECHNICAL SPECIFICATIONS:**

- Large Scale Site (indoor or outdoor)
- If outdoors, ability to peg into grass preferred.
- Access to power required.

## **DURATION:**

Free-flow format. Approx. 30-45 minute audience experience combining puppet making workshops and performance. Run for minimum 3 hour sessions.

## **AGE SUITABILITY:**

3+ years



**The Hive**  
*Produced by Spare Parts Puppet Theatre  
Presented by Go for 2&5  
Created by Leon Hendroff  
Directed by Philip Mitchell  
Musical Performance by Nick-Pages Oliver and  
Amberly Cull and Composed by Robert Woods*



# THE LAST NUMBAT

## SUITABILITY:

Suitable for any festival, outdoor event or venue.

## TECHNICAL SPECIFICATIONS:

- The Last Numbat requires a hard, flat floor space of 22.7m Width x 23m Depth x 7m Height, and access to power
- The total box truss dimensions are; 5m Height x 5m Width x 10m Depth

## DURATION:

Performed in 30-minute sets.

## AGE SUITABILITY:

Under 10 years with an accompanying adult.

The Last Numbat is a large-scale, interactive performance installation that uses puppetry to explore connection with each other and the sustainability of our natural environment.

What if you thought you were the last of your kind? The Last Numbat believes she may be the last numbat in the world! As she bravely ventures out to explore the world beyond the safety of the log she calls home, you are invited to help tell her story. Twelve audience members will bring the Numbat to life as they become puppeteers and learn to manipulate this large-scale marionette.

*Designed by Leon Hendroff.  
The Last Numbat was  
commissioned by the City of South  
Perth and premiered at the 2020  
South Perth Sounds concert.*



# GALILEO AND CELESTE



Meet *Galileo and Celeste*, giant and mysterious ancient figures that will grab your attention and engage your imagination with their impressive stature and mystique. These oversized and intriguing forms roam amongst the crowd - moving slowly, very slowly in a fast-paced world. A horn calls, making you pause and look deeper into the impressive carapaces, here you are transported to another world, suspended in time and space.

Experience the joy of slowing down with this interactive blend of puppetry, performance and sculpture.

## SUITABILITY

This flexible work is suitable for most festival, outdoor event or venue

## DURATION

Performed in 30-minute sets.

## TECHNICAL SPECIFICATIONS

- Outdoor or large-scale flat performance site.
- Docking station
- Changerooms/space for performers.

## AGE SUITABILITY

ALL AGES

*Galileo and Celeste* is a co-production in association with Spare Parts Puppet Theatre, commissioned by the City of Joondalup and the City of Greater Geraldton. Designed by: Leon Hendroff Directed by: Philip Mitchell

Photo by Miles Noel





# BROLGA

Named after the Australian Crane, *Brolga* is a set of two sparkling roving rod controlled bird puppets that move gracefully above a crowd.

As curious creatures they enjoy to interact with people and will delight onlookers with their intricate and ritualized dance. Each brolga is expertly handled by two puppeteers.

## SUITABILITY

This flexible work is suitable for any festival, outdoor event or venue.

## DURATION

Performed in 40-minute sets

## AGE SUITABILITY

All ages

## TECHNICAL SPECIFICATIONS

- Outdoor or large-scale performance site.
- Changerooms/space for performers

Designed by Leon Hendroff.

# THE GREAT AUSSIE SHEEP MUSTER

## SUITABILITY

This flexible work is suitable for any festival, outdoor event or venue.

## TECHNICAL SPECIFICATIONS

- Outdoor or large-scale performance site.
- Changerooms/space for performers.

## DURATION

Performed in 30-minute sets

## AGE SUITABILITY

All ages

It's the annual sheep muster and there is quite a mob to be mustered. But it is not sheep being mustered here it is the sheep mustering those stockmen.

Don't be fooled by those sheepish eyes - this is one smart flanny boot wearing muster.

Get on the Long Paddock and enjoy this frolicking fun filled muster. This work is ideal to be teamed with sheep puppet making workshops, with an optional 'best in show' presentation.

Designed by Leon Hendroff and  
Directed by Philip Mitchell.



Photo by Miles Noel



# AQUA SAPIENS

## SUITABILITY:

This flexible work is suitable for any festival, outdoor event or venue with high ceilings.

## TECHNICAL SPECIFICATIONS:

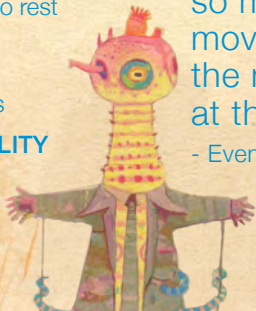
- Outdoor or large-scale site with min space of 20m x 20m
- Flat and hard ground surfaces preferred
- Access to a water and an electrical outlet
- Change room/ space for performers to rest

## DURATION

Performed in 40-minute sets

## AGE SUITABILITY

All ages



Handpainted by Shaun Tan, *AquaSapiens* are advanced sea creatures disguised (very badly) as humans, on a mission to discover if there is intelligent life in the above water world. The cheeky and curious *AquaSapiens* roam around investigating human activity.

Fun and playful, *AquaSapiens* are perfect for activating large spaces, outdoor events or venues with high ceilings.

“The roving *AquaSapiens* brought so many smiles to faces as they moved through the crowd and were the most photographed performers at the festival!”

- Events Officer, Araluen's Chilli Festival.



Designed and developed by Academy Award winning and acclaimed children's author Shaun Tan and designer Jiri Zmitko, the *AquaSapiens* were commissioned by Perth International Arts Festival in 2005.



# TRANSFIGURATIONS

## SUITABILITY

This flexible work is suitable for any festival, outdoor event or venue.

## TECHNICAL SPECIFICATIONS

- 10m x 10m floor space
- Change rooms/ space for performers

## DURATION

Performed in 30-minute sets

## AGE SUITABILITY

All ages

*Transfigurations* can be tailored to your event, from a quiet gentle evening of beauty and elegance to a romping playful celebration. Sightless and silent, these interactive shape-shifters morph as they explore and interact with the world around them. Mysterious, playful, curious, and gentle, an encounter with *Transfigurations* will leave you wanting more...

*Transfigurations* are fully customisable with a variety of colour and texture combinations to choose from.

Developed by Spare Parts  
Puppet Theatre Artistic Director,  
Philip Mitchell in 2015.





# STRING DUET

A one-on-one collaborative puppetry experience. Sit face to face with a puppeteer and work together to bring breath, emotion and movement to the marionette between you.

*String Duet* can be enjoyed by participants and audience members alike and is a great addition to indoor and outdoor events.

## TECHNICAL SPECIFICATIONS

- *String Duet* requires a darkened 2m x 2m floor space
- Shelter from the sun
- Access to power
- Space for performer
- The built up puppet frame dimensions are;
- Height 1500mm x Width 600mm x Depth 575mm

## DURATION

Performed in 40-minute sets. Each interaction lasts approximately 3 minutes.

## AGE SUITABILITY

12 +

Developed by Leon Hendroff, *String Duet* was originally supported and presented by Proximity Festival.



# PUPPETRY WORKSHOPS

Do you need an activity that will engage the children at your event? One that will also give them something to take home to remember their day?

Puppet making workshops are a great activity for festivals, fetes, family days and more. They have parents and children working together to create a masterpiece or they can be used as an opportunity for children to have a moment away from their parents to explore their imaginations.

Our workshop tutors are all professional performers or designers and have been trained to present workshops that will have children brainstorming, creating, making and performing.

To find out more about workshops, or to discuss an idea, get in touch!

## **SUITABILITY**

We will provide all the materials necessary and an appropriate number of workshop tutors to suit the size of your event.

## **TECHNICAL SPECIFICATIONS**

- Flat surface for participants to work on
- Trestle tables
- Access to power
- Shelter from the sun

## **DURATION**

Tailored to your event

## **AGE SUITABILITY**

4+ years





Spare Parts Puppet Theatre is Australia's flagship puppetry company dedicated to the development and creation of the art form. Through puppetry we share stories that connect audiences across generations.

For almost 40-years, we have entertained and enriched the lives of hundreds of thousands of audience members both in Australia and abroad.

## **SPARE PARTS PUPPET THEATRE**

**1 Short Street, Fremantle WA**

**Phone: +61 8 9335 5044**

**Email: [programs@sppt.asn.au](mailto:programs@sppt.asn.au)**



**[www.sppt.asn.au](http://www.sppt.asn.au)**



Department of  
Local Government, Sport  
and Cultural Industries

