

**SPARE  
PARTS**  
puppet theatre



**HOMETOWN**

Inspired by a story by Shaun Tan

**PRESENTER PACK**

# HOMETOWN

## PRESENTER PACK

**SPARE  
PARTS**  
puppet theatre

### About Spare Parts Puppet Theatre

Spare Parts Puppet Theatre is Australia's most respected and adored puppetry company dedicated to the creation of the art form and the artists who we create with. Through puppetry we tell stories that go to the heart of what it is to be human while connecting audiences across generations.

Over the course of our 40 year history we have entertained and enriched the lives of millions of audience members both in Australia and abroad.

[www.sppt.com.au](http://www.sppt.com.au)

### About Hometown

Hometown is a heartfelt new puppet musical about identity, family, and the search for belonging. Inspired by a not-yet-published story by internationally acclaimed author and artist Shaun Tan, the show follows a young girl raised on an alien planet as she faces a life-changing choice — to stay with the only family she's ever known, or venture into the unknown in search of who she truly is.

This is Spare Parts Puppet Theatre's second-ever musical production, featuring original songs, rich visual storytelling, and the magic of black theatre, where puppets and objects appear to float while the puppeteers remain invisible. The result is an immersive, cinematic experience that draws audiences deep into the world of the story.

Hometown continues our long-running creative partnership with Shaun Tan, following acclaimed adaptations of *The Arrival*, *Tales from Outer Suburbia*, and *Rules of Summer*. Suitable for audiences aged 5 and up, it's a powerful and moving theatrical experience exploring love, identity, and what it means to call a place home.

### CREDITS

**Adapting Writers:**

Amberly Cull & Nick Pages Oliver

**Director:**

Philip Mitchell

**Composer:**

Melanie Robinson

**Designer:**

Leon Hendroff

**Sound Designer:**

Lee Buddle

**Musicians:**

Iain Grandage

Karl Florisson

**Lighting Designer:**

Megan Fitzgerald

**Performers:**

Bec Bradley

Nick Pages-Oliver

Amberly Cull

### CONTACT

08 9335 5044

**PRODUCER**

Jessica Rogerson – [producer@sppt.com.au](mailto:producer@sppt.com.au)

**EXECUTIVE DIRECTOR**

Katie Henebery – [ed@sppt.com.au](mailto:ed@sppt.com.au)

**MARKETING & COMMUNICATIONS**

Grant Watson – [marketing@sppt.com.au](mailto:marketing@sppt.com.au)

# HOMETOWN

## PRESENTER PACK

SPARE  
PARTS  
puppet theatre

### PERFORMANCE SPECIFICS

#### TOUR DATES

Touring 2027

#### COST

Presenter Fee \$3,500 per show\*

\*Subject to tour funding. Discounts available for longer presentations.

#### DURATION

45-minute performance plus 10-minute Q and A

#### SUITABLE VENUES

All venues. Best suited for Black Box Studios.

#### MAXIMUM PERFORMANCES PER DAY

3

#### MAXIMUM PERFORMANCES PER WEEK

10

#### MINIMUM BREAK BETWEEN PERFORMANCES

2 hours

#### PERFORMANCE HISTORY

December 2024 – 2 Week School Season,  
Claremont WA

January 2025 – 3 Week GP Season, Claremont WA

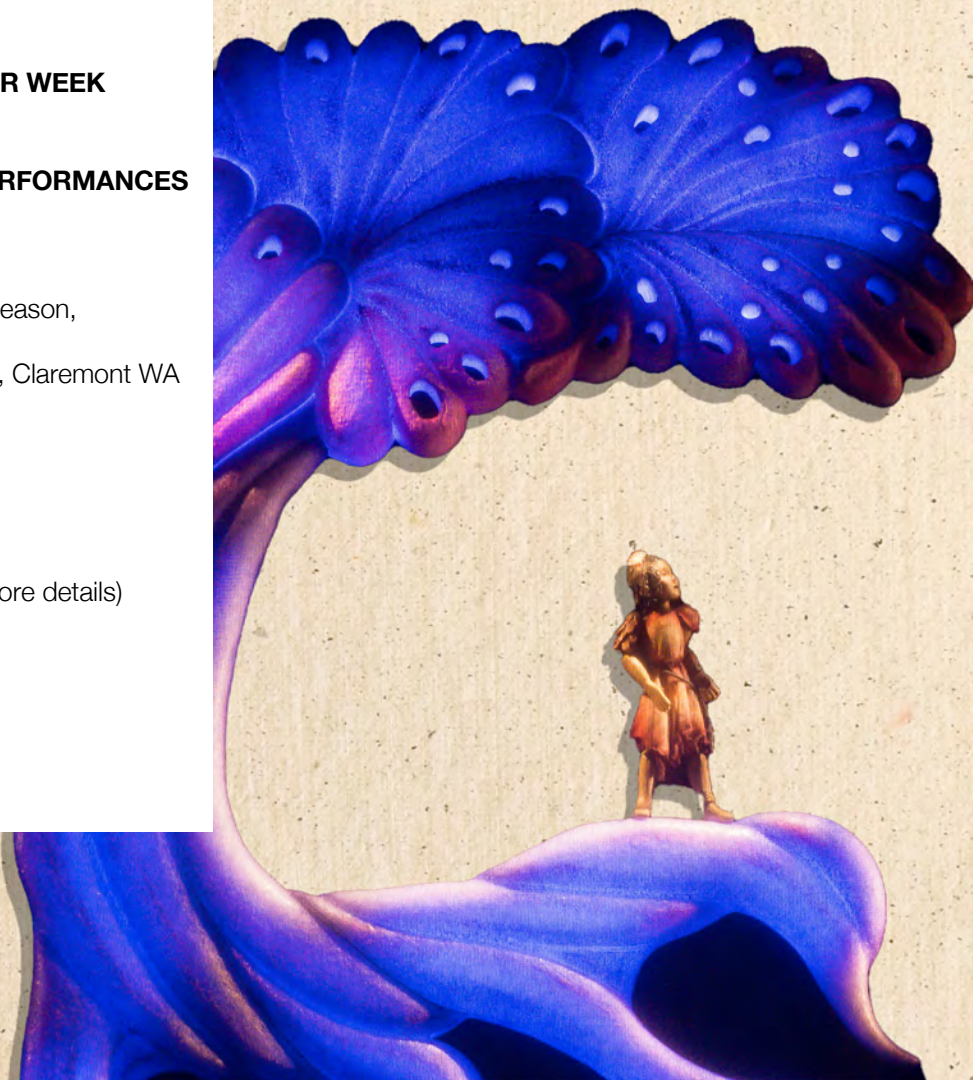
#### COMMUNITY ENGAGEMENT

Q and A session every show

Foyer engagement activities

Workshops

Local Artist Development (Ask for more details)



# HOMETOWN

## PRESENTER PACK

SPARE  
PARTS  
puppet theatre

### MARKETING AND LINKS

#### PROMO VIDEO

[vimeo.com/sparepartspuppettheatre/hometown2027](https://vimeo.com/sparepartspuppettheatre/hometown2027)

Full recording available on request. Not for distribution.

#### PRODUCTION IMAGES

High Resolution marketing images provided. Sample Images to the right.

#### TARGET AUDIENCE

Engages audiences of all demographics. Lovers of theatre, puppetry, and musicals. We recommend ages 5+.

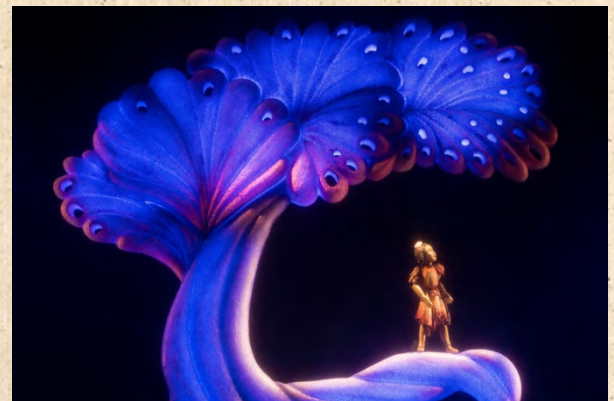
#### MARKETING MATERIALS

Spare Parts Puppet Theatre will provide each venue with a comprehensive marketing toolkit, including all performance, company and artist information, high quality photos and video promos, key audience demographics and advice on how to engage. We also cross promote on our social media, website and newsletter.

#### MEDIA QUOTES

★★★★ “At this time of year, the emotional pull of home is strong – either you have been back in the bosom of family, or you have pondered why you were so far away. Hometown celebrates that innate sense of belonging...” - Victoria Laurie, Artshub

“It is a challenging, inventive and thoughtful journey into identity and belonging, and is one of the most beautiful and engaging shows I’ve seen at Spare Parts for a long time.” – Sarah, McNeill, POST Newspapers



# HOMETOWN

## PRESENTER PACK

**SPARE  
PARTS**  
puppet theatre

### PRODUCTION DETAILS

#### TOURING PARTY

3 Cast, 2 Crew  
Touring show laptop with QLAB – Audio  
Touring Lighting Desk (Vista) TBC

#### STAGE

Min stage width: 8.5m (excluding wings)  
Min stage depth: 7m  
Min stage height (under lighting grid): 5.5m  
Min wing space: 2.5m  
Please discuss options outside these measurements.  
Main set footprint: 7800mm(w) x 3000mm(d) x 3750mm(h)

#### FLY REQUIREMENTS

N/A

#### MASKING REQUIREMENTS

Full black out on-stage required  
Black masking DS up to set (ie FOH tabs with boarder)  
2x Set black wings as per floor plan  
US black drape  
Boarders to mask lighting rig as required

#### LIGHTING REQUIREMENTS

Pre-rig required (if not, additional Bump in time required)  
Over-head and boom lighting. Conventional or LED.  
In-house lighting desk preferred. Touring Vista console as back-up.  
2x universes of DMX preferred (one for touring set LX, one for house rig).  
4x Booms required in wings (TBC tour truss up-rights for booms)

#### AUDIO REQUIREMENTS

PA to suit venue with foldback onstage and a mini jack input at control for touring QLAB  
All show audio is pre-recorded and played back.  
No live music or vocals.  
Comms from operating position to backstage preferred, not essential.  
Mics may be required for Q and A and/or acknowledgement of country.

#### AV REQUIREMENTS

N/A

### CREWING REQUIREMENTS

Pre-rig is required unless negotiated prior.  
Crewing figures negotiable for smaller/regional venues.

#### Pre-Rig:

Lighting and Masking as needed.  
Lighting Plan and Hanging Plot to be provided and discussed prior to arrival.  
Power and DMX drop required to centre stage for set LX

#### Bump in: 8hrs

1x LX  
1x (LX/SD/AV)  
2x MX  
1x Duty Technician (if required by venue)

#### PERFORMANCE:

##### 45min duration (Plus 10min Q&A)

1x Duty Technician  
(LX or SD if required by venue, but not essential)  
Spare Parts Touring Stage Manager will operate or call Lighting and Sound

#### BUMP OUT: 6hrs

1x Duty Technician  
3x MX

#### DRESSING ROOMS

1x dressing room with bathrooms  
Green room access  
Washing facilities appreciated

#### DOCK AND PARKING

Dock access preferred with flat run to stage (not essential).  
Parking for Touring truck/vehicle